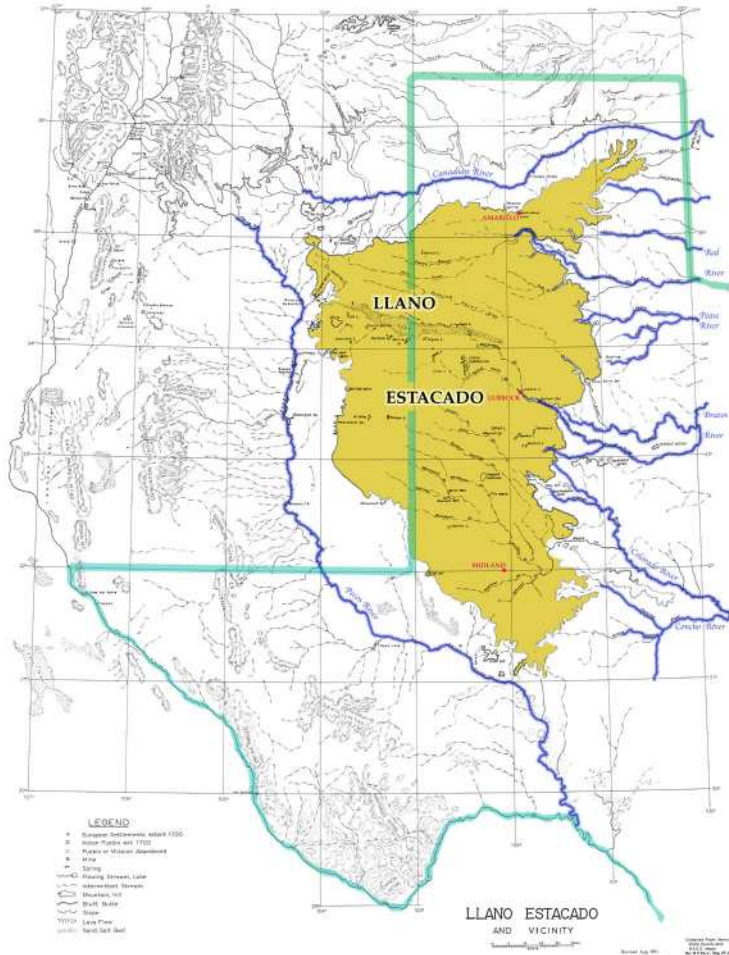


# THIS WEEK ON THE LLANO ESTACADO

November 2-6, 2009



The Llano Estacado is a huge tableland, plateau, or mesa (depending on what term you prefer.) In the northwestern corner, the elevation is over 4000 feet, and at the southeastern corner the elevation is 2600 feet.

Originally it was grassland. Now over 2/3rds of it is farmland. The southern third has become mesquite brushland. The draws of the Llano Estacado become the major rivers of Texas (Colorado, Brazos, and the Red.)

American Indians visited the Llano Estacado to hunt buffalo during wet years (the buffalo stayed to the east in dry years.)

Ciboleros and Comancheros (Hispanic settlers of northern Mexico and northern New Mexico) visited the Llano Estacado to hunt buffalo and trade with the Comanches. It was not until the invention of the windmill that people actually lived on the Llano Estacado, beginning in the 1880's.

Students and teachers challenge; Using the Sibley Nature Center's website ([www.sibleynaturecenter.org](http://www.sibleynaturecenter.org)) learn more about your home. 1. What are the 8 major habitats of the area? 2. What American Indians visited the region before the Comanches? 3. What animals lived here during the Ice Age? 4. Who was Charlie Goodnight and Jose Piedad Tafoya? 5. Who were the pastores? 6. Where do sandhill cranes spend the night during the winter? (Use the website search engine to find the answers!)